

The following presentation was given at the 20th Annual Conference for the National Institute for the Study of Transfer Students. In some cases, photos have been removed to avoid possible copyright infringement. Please cite responsibly and direct questions to the original presenter(s).

Educational Session

2345 - Train on Your Own Schedule: Developing a College-Wide On-Demand Transfer Training Program

Partnerships and Collaboration, Leadership and Strategic Planning

Students don't just turn to academic advisors for transfer advice; they go to any faculty & staff they trust. When focusing on just training professional advisors, we are missing a population of faculty & staff who also support our students. To meet this need, our institution developed an on-demand transfer advising training open to all faculty & staff. We will provide how the curriculum was developed and how to customize trainings based on your needs.

Jacqui Rogers-Frere, *Coordinator of Transfer and Articulation*

College of Southern Maryland

TRAIN ON YOUR OWN SCHEDULE

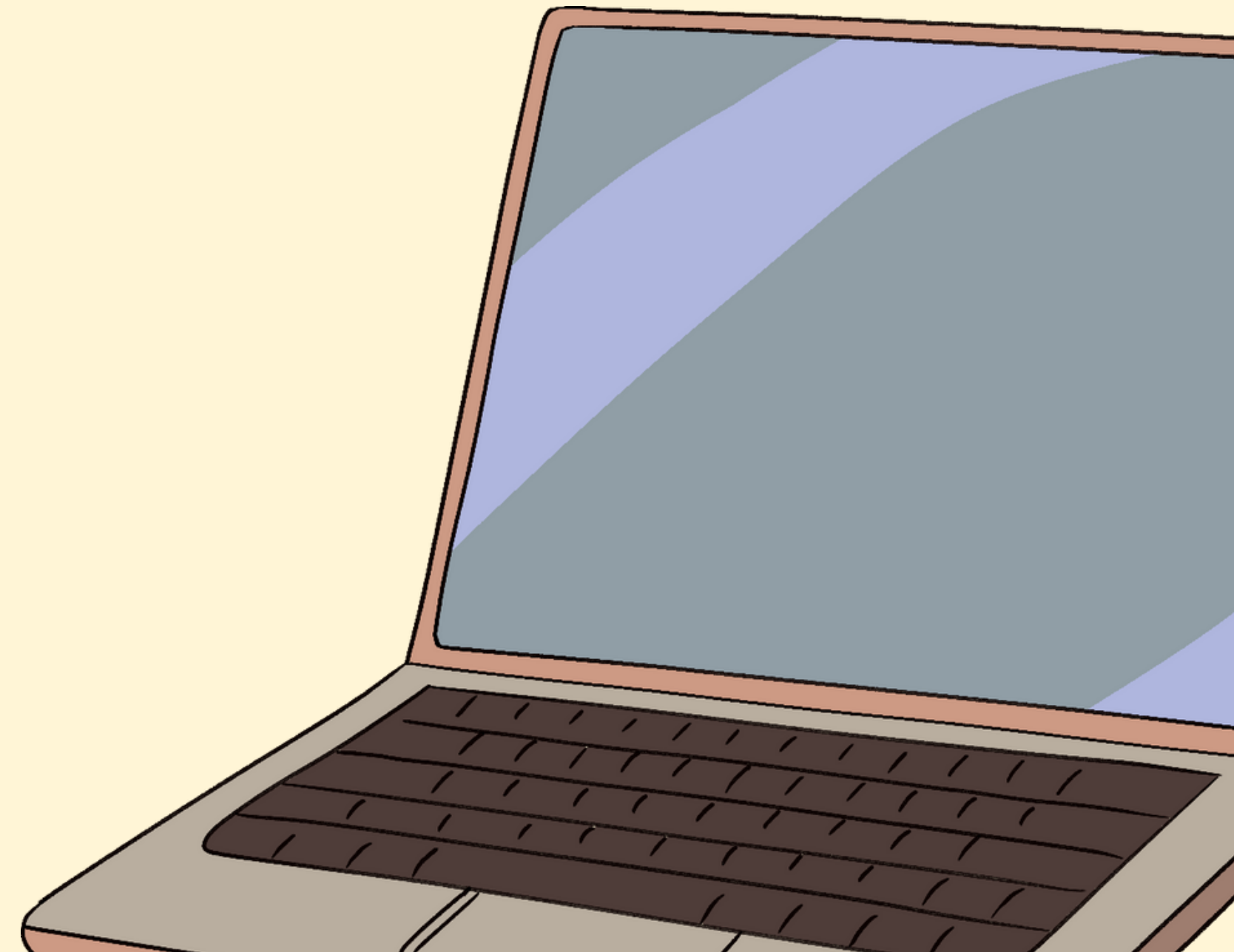
DEVELOPING A COLLEGE-WIDE ON-DEMAND
TRANSFER TRAINING PROGRAM

Presented by: Jacqui Rogers-Frere
College of Southern Maryland

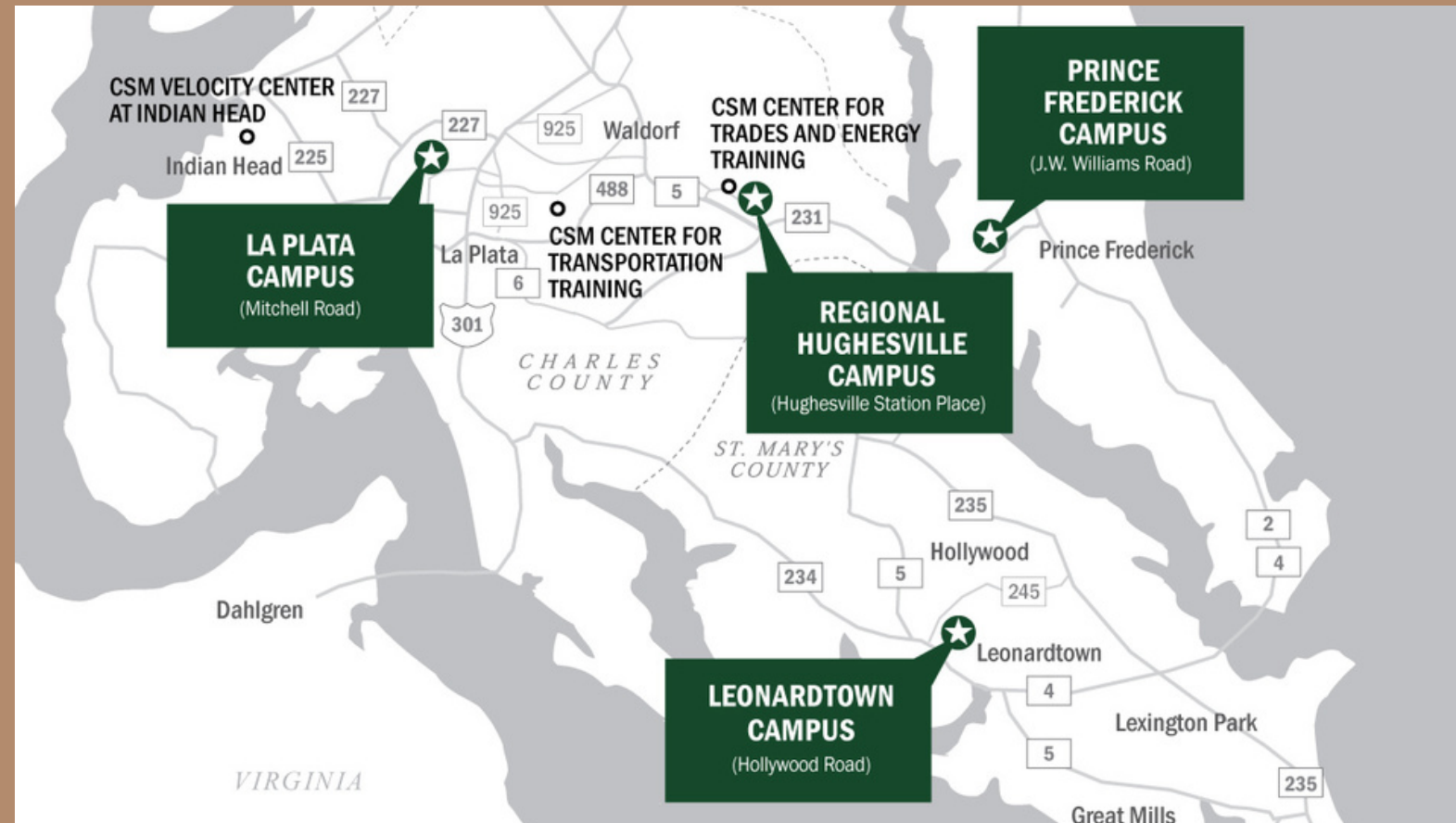


OVERVIEW

- Background on College of Southern Maryland
- Outline CSM's Transfer Training Model
- Utilizing Technology
- Developing Training Guides
- Activity
- Data
- Long-Term Goals

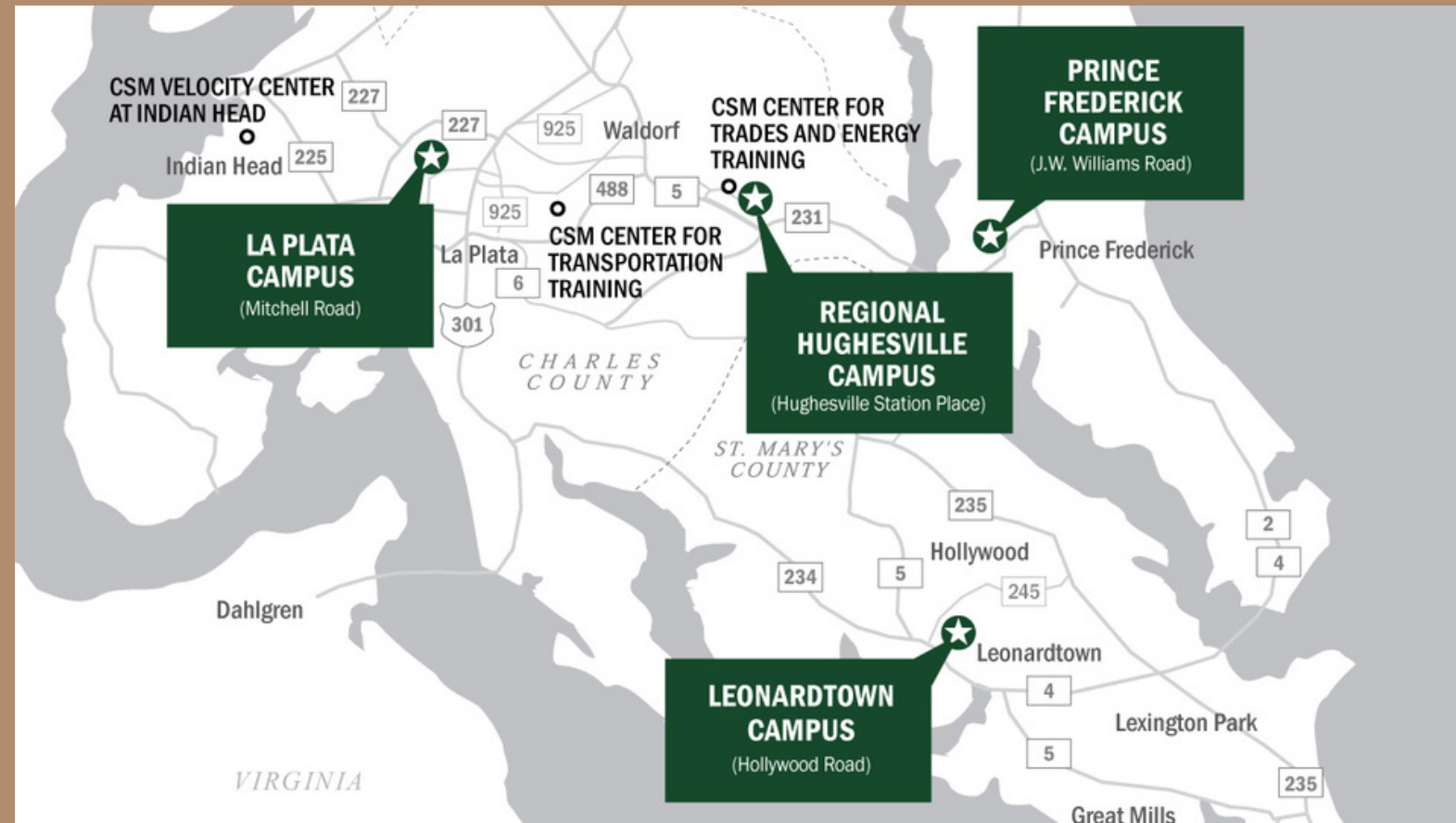


COLLEGE OF SOUTHERN MARYLAND



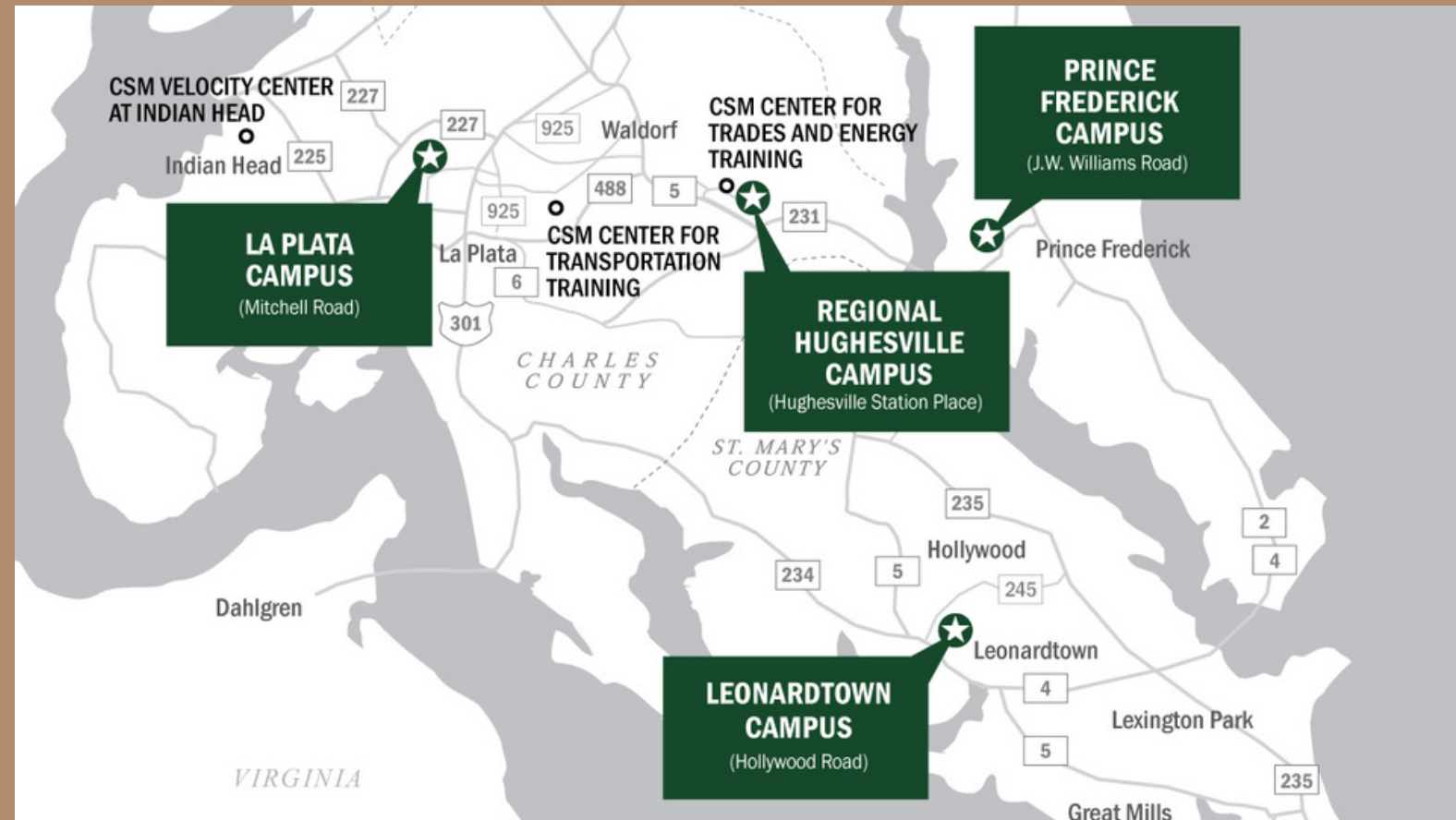
- 4 campuses covering 3 counties
- Located between two military bases
- 5,177 credit-seeking students
- 59.5% part-time; 40.5% full-time
- 57.5% enrolled in a transfer degree
- 65.6% are between 18 and 24 years old

COLLEGE OF SOUTHERN MARYLAND



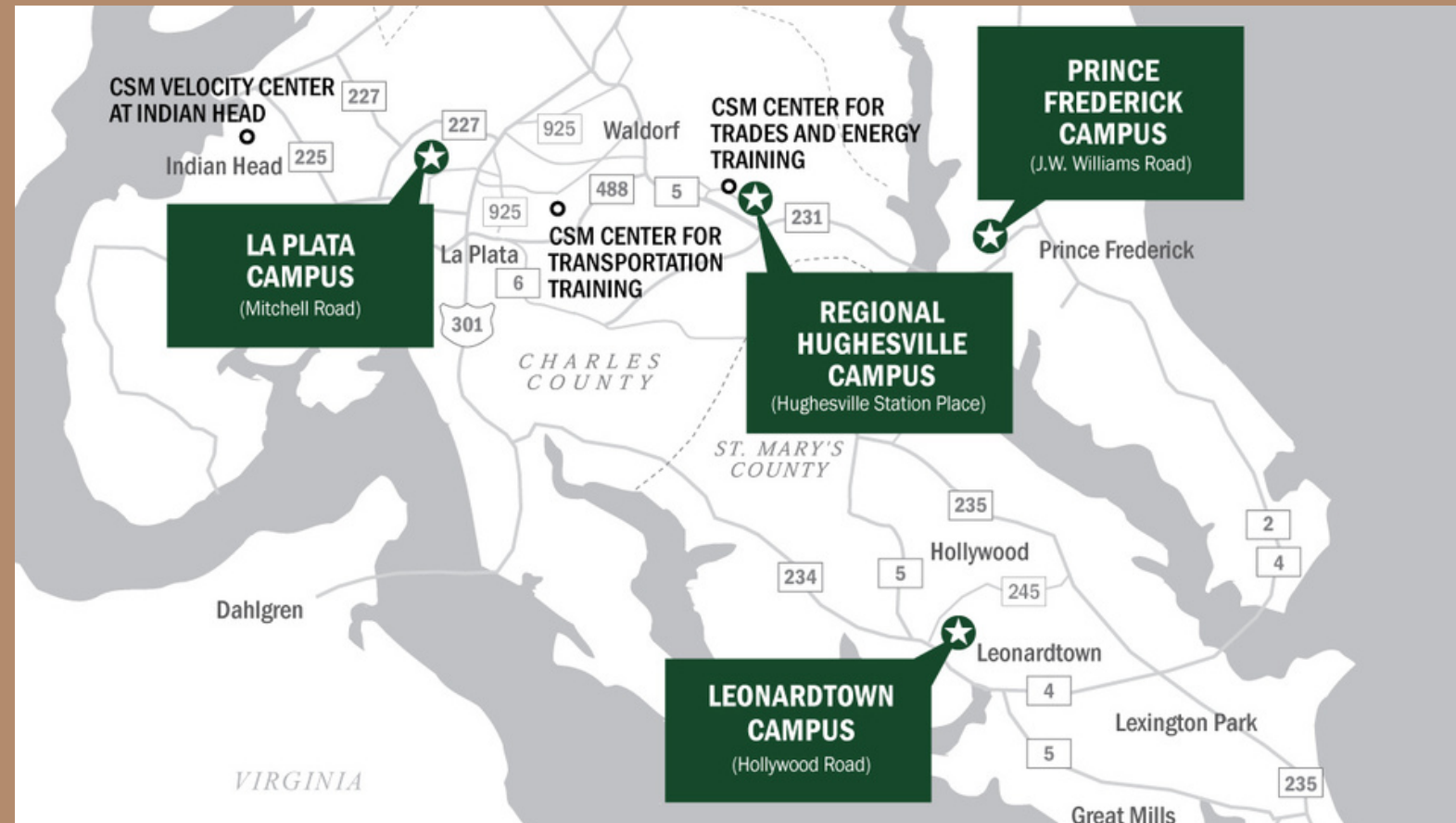
- Most popular degrees:
 - Arts and Sciences, AA
 - Business Administration, AS
 - Nursing, AS
 - Pre-Professional Health Sciences, AS
 - Cybersecurity, AAS
 - Arts and Sciences: Social Sciences, AA
 - Business Management, AAS
 - Computer Science, AS
 - Engineering, AS
 - General Studies: Criminal Justice, AA

COLLEGE OF SOUTHERN MARYLAND



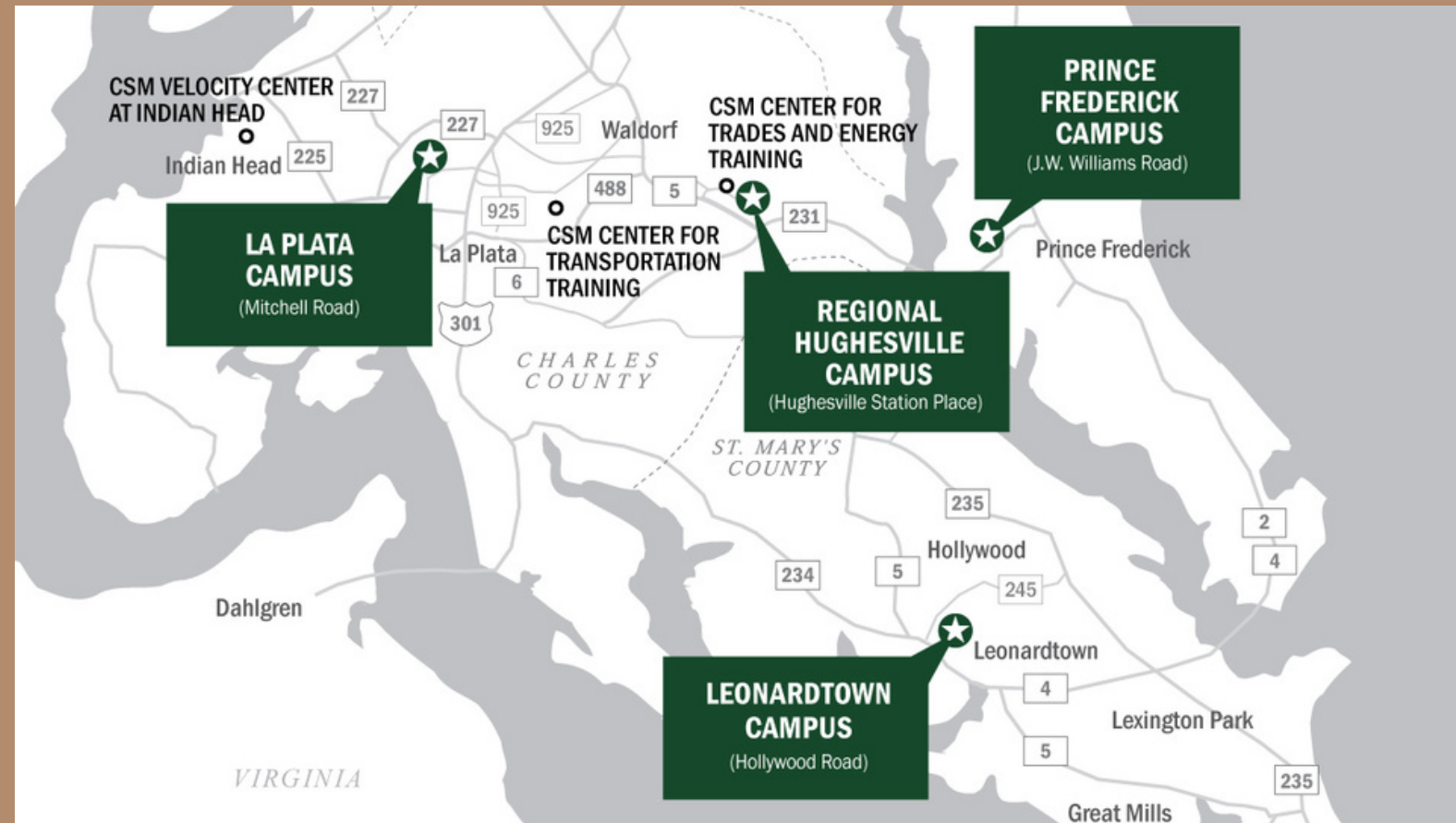
- Transfer destinations:
 - 2 bachelor-granting options in Southern Maryland: USMSM, SMCM
 - Approx. 44.4% transfer to an University System of Maryland Institution
 - 53% of students attend one of our Top 10 Transfer Destinations
 - Approx. 40% of students transfer out of state

COLLEGE OF SOUTHERN MARYLAND



- Transfer-Related Roles on Campus:
 - Transcript Evaluator
 - Pre-Engineering Coordinator
 - ATB Nursing Coordinator
 - 16 Professional Advisors, assigned by pathway
 - 53 Faculty Advisors
 - Coordinator of Transfer & Articulation

COLLEGE OF SOUTHERN MARYLAND



- Coordinator of Transfer and Articulation
 - Create & manage all articulation agreements for institution
 - Assist & consult on curriculum
 - Back-up for transcript evaluations
 - Plan transfer events
 - Conduct Transfer Advising Trainings

PROBLEM:

HOW TO PROVIDE
CONSISTENT & UP-TO-DATE
TRAININGS ACROSS MULTIPLE
CAMPUSES?



THE BEGINNING

OUTGOING TRANSFER CRASH COURSE

- What is transfer
- CSM Transfer Services
- Articulation Agreements vs. Course-by-Course transfer
- Benefits of Associate's degree
- Types of transfer agreements
- Brief intro to special transfer programs
- Transfer scholarships
- Transfer events



THE CORE

TRANSFER BASICS

- Common terminology
- Questions to ask students to help guide them in the transfer process
- Articulation agreements
- How to conduct a course-by-course transfer evaluation
- In state vs. out of state transfer
- Types of transfer
- Utilizing Student Planning software to plan your transfer experience



PATHWAY ADVISING

PATHWAY-SPECIFIC TRANSFER ADVISING

- Arts and Humanities
- Business and Information Systems
- Education and Public Service
- Health
- Science, Technology, Engineering, and Math
- Trades, Transportation, and Energy



ELECTIVES

SPECIAL TRANSFER TRAININGS

- Institution-specific transfer trainings based on specific popular transfer destinations
- Pre-Transfer Programs
- Transfer Scholarships
- Pre-Health Advising
- Dual Enrollment
- Program-Specific, such as:
 - Medical Laboratory Technology
 - Engineering



BUSINESS & IS PROFESSIONAL ADVISOR

- Outgoing Transfer Crash Course
- Business & Information Systems Transfer Advising
- UMD Transfer Advising
- Pre-Transfer Programs Advising

HEALTH PROFESSIONAL ADVISOR

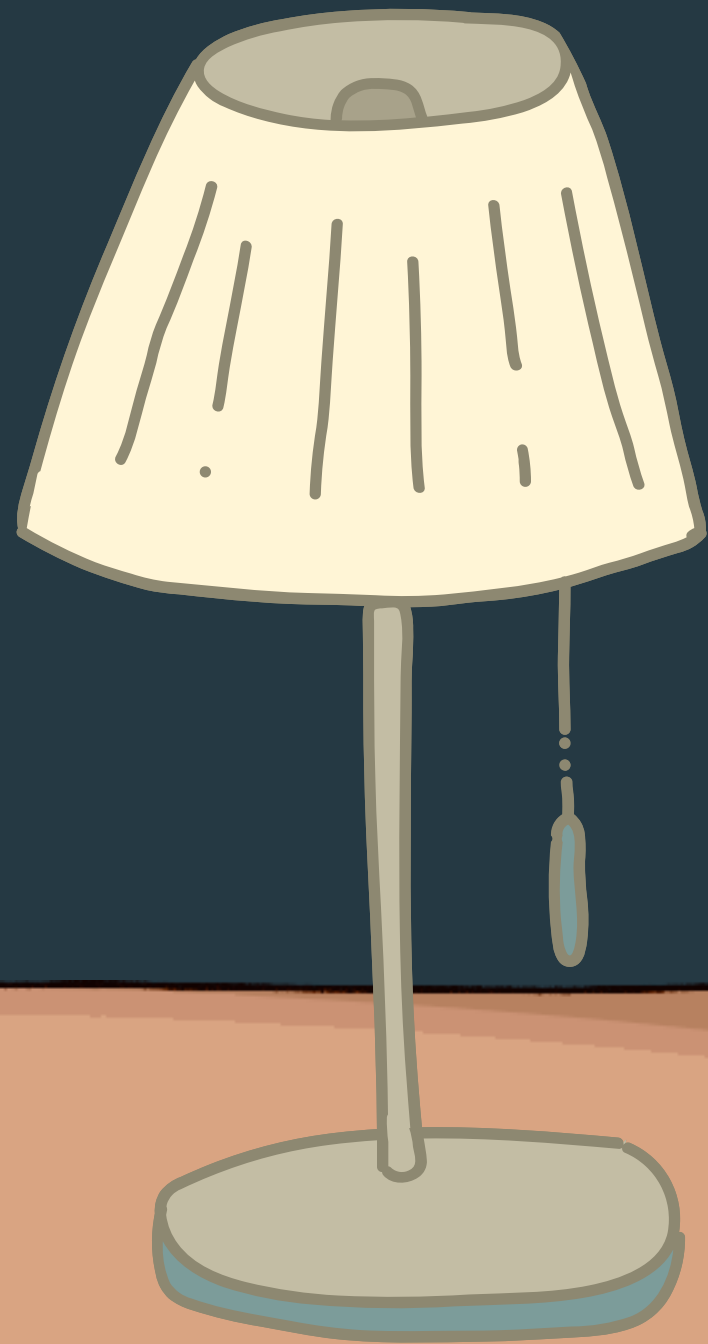
- Outgoing Transfer Crash Course
- Health Transfer Advising
- UMGC Transfer Advising
- Medical Laboratory Technology Transfer Training
- Pre-Health Advising



PROBLEM:
HOW DO I FIND A PLATFORM
TO HOST THESE TRAININGS
ON?



**CHECK WITH HUMAN
RESOURCES, DISTANCE
LEARNING, FACULTY
DEVELOPMENT, ETC.**



BENEFITS



- Ensures consistent information is being delivered in trainings.
- People can train on their own schedules.
- Customizable trainings.
- Can embed quizzes at end of modules to help see if important concepts are being kept (or common issues/mistakes with wrong questions).

[pollev.com/jacqui
rogers238](https://pollev.com/jacquirogers238)





TRAININGS COMPLETED

- **17 FACULTY & STAFF HAVE COMPLETED 53 TRAINING MODULES, INCLUDING**
 - **4 ENROLLMENT ADVISORS**
 - **8 PROFESSIONAL ADVISORS**
 - **5 FROM OTHER AREAS ON CAMPUS**



**FUTURE GOALS:
DEVELOPMENT INTO
TRANSFER ADVISING
CERTIFICATE**



QUESTIONS?

If you want to connect:

Email: Jgrogers@csmd.edu

Twitter: [@jacquiurogerssa](https://twitter.com/jacquiurogerssa)

linkedin: [in/jacquelynrogers/](https://www.linkedin.com/in/jacquelynrogers/)

